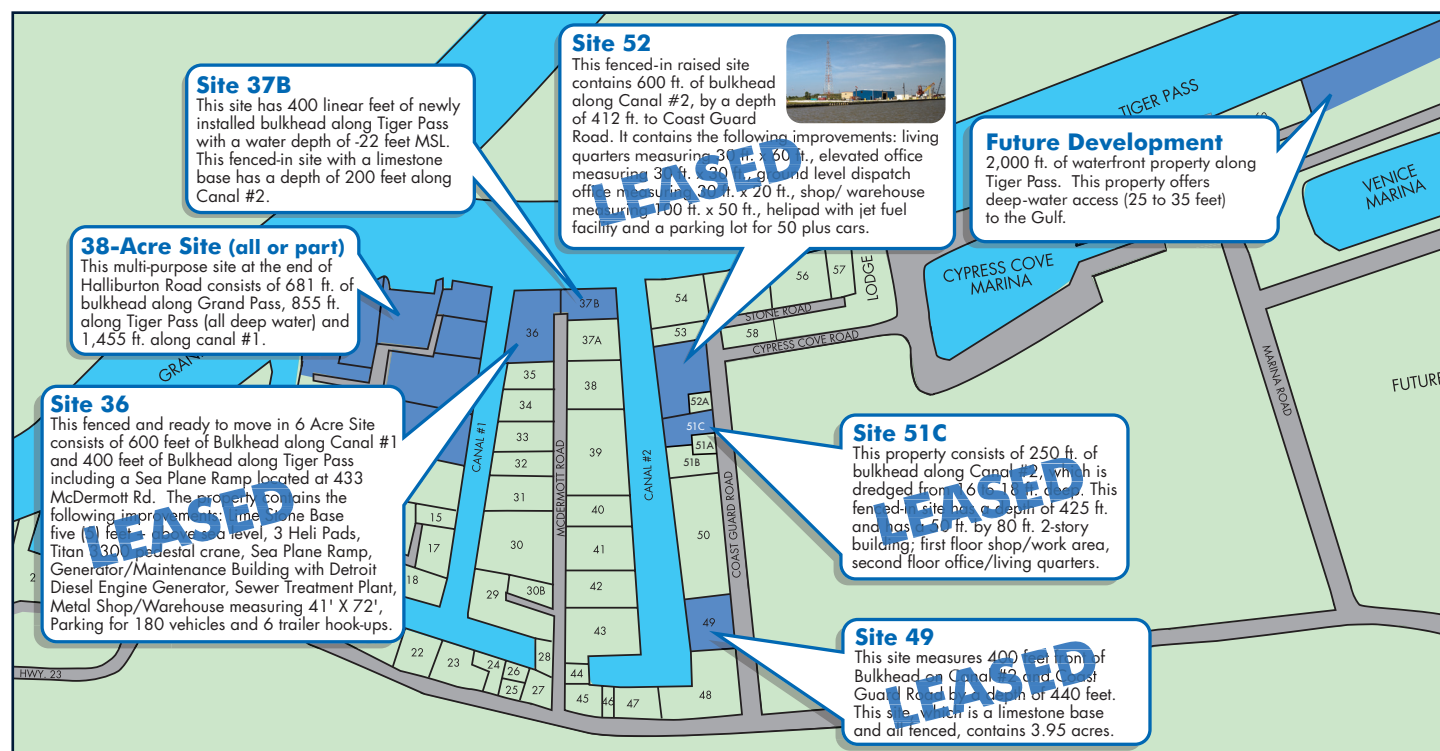




8311 Highway 23 • Suite 104  
P. O. Box 7125  
Belle Chasse, LA 70037

## Opportunities abound at the VPC

The VPC offers ready to move in properties as well as customizing to meet your company's specific needs.



The Venice Port Complex Report will be published quarterly. If you have any updates or news that you would like to contribute, please contact George Pivach II at 504-392-1830 or [gpivach@veniceportcomplex.com](mailto:gpivach@veniceportcomplex.com) [www.veniceportcomplex.com](http://www.veniceportcomplex.com)



# The VPC Report

SPRING 2014

## The VPC is Hot, Hot, Hot

We have had an unusually cool spring in south Louisiana, but activities are heating up at the Venice Port Complex. Oil and gas exploration is expanding in the Eastern and Central Gulf, a number of major infrastructure improvements are in full swing and world class fishing tournaments are around the corner.

On March 19, the federal government offered acreage for lease in the Eastern and Central Gulf for the first time since 2008. The sale opened 40 million acres to new drilling off the coasts of Louisiana, Mississippi and Alabama. The VPC is the shortest distance to the Eastern and Central Gulf.

The sale at the Mercedes-Benz Superdome drew bidding from 50 companies and led to \$872.1 million in high bids. A total of 329 tracts spanning more than 1.7 million offshore acres were included in the lease sale. This was a positive sign for domestic energy exploration and production in the Gulf.

Construction along Tidewater Road will be complete this May, raising the road to +5 MSL from Coast Guard Road to the end, and the maintenance dredging of Baptiste Collette Bayou will be finished by the end of August.


Ongoing improvements include the \$671 million federal levee project that includes raising and strengthen-

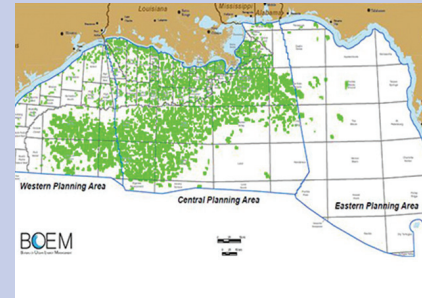
ing 23 miles of levees on the west-bank to protect LA State Hwy 23 from tropical events. Construction also continues on the Peters Road Bypass connecting Highway 90 to Highway 23 south of Belle Chasse for a faster, more direct route to Venice from New Orleans. A future improvement includes the deepening of Baptiste Collette Bayou to -22 MSL.

Meanwhile, this spring the Venice Port Complex continued our support of the Plaquemines Parish 4-H Program with a donation of \$7,500 that will go towards funding youth activities in our parish.

I would like to welcome Tetra-Tech and Couvillon Group LLC to site 36 and Athena Construction to site 49. I would also like to congratulate the Buras Volunteer Fire Department on a successful Oilfield Crawfish Boil.

Don't forget that fishing is picking up. Please check out the tournament schedule for Cypress Cove Marina at [www.cypresscovevenice.com](http://www.cypresscovevenice.com) and Venice Marina at [www.venicemarina.com](http://www.venicemarina.com).

  
George Pivach II  
Venice Port Complex Vice President  
and General Counsel



Please visit the VPC Website at [www.veniceportcomplex.com](http://www.veniceportcomplex.com)

### What's Inside:

2) Madere & Sons Towing

2) Ecoserv committed to technical innovation

3) VPC supports 4-H





## INDUSTRY UPDATES

### Madere & Sons Towing

It all began in 1982. Al Madere built his first lugger tugboat, the M/V Captain Hebert and established Madere Inc.; a marine towing business with the motto "You Call, We Haul." The company began with Al as the captain, one deckhand and his wife Cathy keeping the books. Business was steady until the oil industry took a severe plunge in production in 1983. The Captain Hebert and most tugs across southeast Louisiana remained tied up for weeks at a time, with little work available. Times were tough. Madere Inc. relied on local brokers for jobs, but with few job opportunities and a plentiful supply of tugs available for hire, the industry was indeed competitive. During those difficult times, no jobs were turned down no matter how foggy or challenging the task.

Over time, customers noticed and appreciated this work ethic, and Madere Inc. saw the need to expand. In 1997, Al partnered with his sons, Chad and Gene, to create a new business: Madere & Sons Towing. With the new business came additional tugs and services. Madere & Sons Towing now owns and operates seven tugboats; the Captain Hebert, Lady Josie, Master Dylan, Master Tyler, Master Landin, Miss Alene and the Master Myles. In addition to towing services such as rig moving, rig tending and construction related jobs, all of the vessels are capable of transferring potable water and diesel fuel and have an ample amount of deck space for equipment transport. Madere

and Sons Towing also offers a full line of barge rentals, including water barges, spud barges, deck barges and shale barges. The Maderes take a hands-on approach in all aspects of the business from maintenance to job consulting in order to accommodate the need of any customer in the oil industry.

With the increase in tugs and services available, Madere & Sons Towing needed to increase the number of captains and deckhands they employ. Al, Chad and Gene always endeavor to hire experienced, licensed crew members who take pride in their job, work to keep the vessels and equipment in top notch condition, and have a work ethic similar to the Maderes. Currently, there are more than 20 employees, many of whom have worked for the Maderes for over 10 years. Madere & Sons Towing's key to keeping great employees is paying them a competitive salary, offering premium health insurance, but most of all treating them like family... which is how Al started the business in 1982 and continues to run it today... "a family business."

For more information on Madere & Sons Towing,  
call 504-657-8283

or visit [www.maderetowing.com](http://www.maderetowing.com)



### Ecoserv committed to technical innovation, safety and the environment

Ecoserv was formed in March 2014 with the merger of Houston-based Newpark Environmental Services, LLC (NES), the region's leader in E&P waste disposal, with Offshore Cleaning Systems, LLC (OCS), the Gulf of Mexico's leader in offshore cleaning services. This merger combines the efforts and technical proficiencies of two innovators and brings to our industry the first, full-service solution for environmental waste management.

#### One Call, One Contact, Your Solution.

Ecoserv offers fully integrated, and environmentally friendly specialized cleaning, waste management and disposal services. The company's unique brand of solutions makes for a simplified process for managing environmental waste streams while reducing downtime. Ecoserv is equipped to safely and effectively manage RCRA exempt exploration and production (E&P) wastes and naturally

occurring radioactive materials (NORM).

The company has also pioneered the low-pressure injection process to properly handle and dispose of non-hazardous industrial waste (NID) streams. This patented method provides customers with the assurance of knowing that wastes are being handled and disposed of using the most environmentally sound means available.

Operating out of 14 locations throughout the Gulf Coast and Permian Basin of West Texas, Ecoserv offers a number of convenient locations to serve the region. Among these locations, Ecoserv is proud to serve customers with both a dockside cleaning facility and a waste transfer station at the Venice Port Complex.

Ecoserv is founded on the principles of technical innovation, safety, and a commitment to both the environment and our industry. The company is focused on creating ease-of-use and profitability for all of our customers.

For more information on how Ecoserv can effectively reduce your downtime while safely and efficiently managing your waste by-products, visit [www.ecoserv.net](http://www.ecoserv.net) or call 844-4ECOSERV.



### VPC continues its support of the Plaquemines Parish 4-H Program



(left to right) George Pivach, VPC; Heather Egger, 4-H Program Coordinator; and Jenny Simpson, 4-H Program Assistant.

The Louisiana Fruit Company/Venice Port Complex continued its support of the Plaquemines Parish 4-H Program with a recent donation of \$7,500.

"We have been an annual supporter of the Plaquemines 4-H Program because we know the important role this

organization plays in the lives of so many children and young adults in our community," said George Pivach, VPC vice president and general counsel.

Since 1995 the Plaquemines Parish 4-H Program has been bringing youth and adults together in Plaquemines Parish to learn about agriculture through hands-on learning. Activities range from animal and plant sciences to robotics. 4-H'ers learn problem-solving skills that make a positive impact upon their community. 4-H helps build self-confidence in their members, while teaching them responsibility and decision making skills. Today there are over 500 members in 13 organizational clubs and one Junior club in Plaquemines Parish.

"The 4-H program of Plaquemines Parish wishes to extend our sincere gratitude to VPC/ Louisiana Fruit Company for their very generous donation of \$7,500. Their continued support helps 4-H'ers attend camps, field trips and many other activities. We appreciate the support we receive from the community in serving the youth of Plaquemines Parish," said Heather Egger, 4-H Plaquemines Parish, LSU AgCenter.



### Berry Bros. General Contractors, Inc.

Berry Bros. General Contractors began operating on the banks of the Atchafalaya River in Berwick, Louisiana in 1956. Since then, the company has expanded to include operations nationwide. Still, the heart of Berry Bros. remains on the Gulf Coast where it employs equipment and personnel that are second to none in the industry. Berry Bros. primary marine services include pile driving, dredging, pipelines, and hook work.

While primarily an oilfield service contractor who has worked for all of the major oil companies, they have also completed projects for local municipalities as well as federal entities. From its inception in 1956, Berry Bros. has specialized in marine construction. Currently, they operate four fully-equipped pile driving barges ranging in crane sizes from 70 tons with 100' of boom, up to 230 tons with 260' of boom. These barges are capable of installing steel, wood, and concrete piles including bulkhead installation, docks, fender systems, dolphins, clusters and any type of specialized dock facilities that may be required. In addition

to the pile driving fleet, Berry Bros. operates two bucket dredges as well as two tugs. Berry Bros. operates crane barges ranging in size from a 40 ton self-propelled spud barge to a 230 ton heavy lift barge. Berry Bros has strategically placed equipment located within the Venice Port Complex to better service its customers along the Mississippi Delta.

From its corporate headquarters in Berwick or their facility in Shreveport, Berry Bros. can fabricate and deliver skid packages, spool pieces, or structural members and ship to the jobsite ready to install.

As the oil patch has evolved over the years, so too has the operations of Berry Bros. Safety has always been at the forefront and continues to be there today. Always striving to exceed the expectations of its customers, Berry Bros. has nearly 100 years of combined project management experience and can deliver your project safely and efficiently.

For more information call 985-384-8770 or visit [www.bbgi.com](http://www.bbgi.com).