

Happy New Year

I begin by wishing everyone a Happy New Year. In the early stages of 2016, we find ourselves in yet another low point of the historically cyclical oil and gas industry. The price of oil has plummeted beyond comprehension, knocking down an industry that has been the backbone of this Parish, State and Country for decades. However, it is important to continue progressing, embrace change and prepare for the better days to come. If history has taught us anything, it is that the volatile oil and gas industry will rebound with a vengeance. Be able to remember 2016 as the year when you positioned your business for years of continued success. Start by locating in The Venice Port Complex, where the future is bright.

A deeper Baptiste Colette Bayou remains the focal point for the future. The Baptiste Colette Bayou Deeping Study is currently under the review of the United States Assistant Secretary of the Army. With both coastal restoration and navigational impacts, the Baptiste Colette Bayou Deeping Study is innovative and squarely within the United States Secretary of the Army's full consideration. I, along with everyone involved, will continue to aggressively promote the deepening of Baptiste Colette Bayou.

The prospect of a deeper Baptiste Colette Bayou coupled with the cyclical oil and gas industry presents hope for the future. However, in times such as these, even the most mundane business decisions can be the difference between success and failure. Efficiency is key now more than ever, making the Venice Port Complex the logical choice for your business.

At The Venice Port Complex, we are committed to providing opportunities at afford-

able rates, improving existing relationships and creating new ones. The Venice Port Complex's location offers deep water access to the entire Gulf of Mexico, most notably the shortest route to the millions of acres of new exploration in the Eastern Gulf of Mexico.

Shorter distances equal lower costs, period.

The Venice Port Complex offers sites situated to suit a wide array of businesses while providing room for growth and expansion. Our on-site management team is available to assist your business in any way possible while committed to maintaining a safe, clean and fully operational port. Other perks include the lowest ad-valorem and sales tax rates in South Louisiana, close proximity to New Orleans with easy access via the levee protected Louisiana Highway 23, a low crime rate and an excellent quality of life. In short, the Venice Port Complex can serve your business' every need, all at lower costs to your business. I hope we can all make 2016 a year to remember, not for the struggles associated with a crippled oil and gas industry, but for progress made even in what seems to be the worst of times.

The future is bright for those of you committed to pursuing it. Poise your business for success and set up shop in the Venice Port Complex.

George Pivach II
Venice Port Complex Vice President and General Counsel



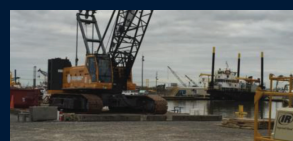
Please visit the VPC Website at www.veniceportcomplex.com

What's Inside:

2) Fab-Con Incorporated

3) Clean Gulf Associates, Inc.

3) 9th Annual VPC Thanksgiving Drive



INDUSTRY UPDATES

Deep South Oilfield Construction, LLC

In July 2014, the Maderes again took their services to new heights, when Deep South Oilfield Construction, LLC began providing dockside services at 319 Tidewater Road in Venice. After three decades of providing marine towing services and barge rentals and one year of meeting the construction needs of customers, the Maderes ventured into providing dockside services.

Deep South Oilfield Construction, LLC's dock occupies approximately 600 feet of waterfront, along with a 150 ton crane, 35,000 pound capacity forklift, and plenty of parking for customer use. Additionally, there is ample space for staging and onsite storage. Deep South Oilfield Construction LLC's 24 foot wide loading ramp can handle virtually anything that can be driven on the highway. Currently, Deep South Oilfield Construction, LLC is in the process of expanding the dock and



installing an elevated pedestal-type hydraulic crane, which should be operational by mid-February. The dock expansion and additional crane will help accommodate their customer's needs.

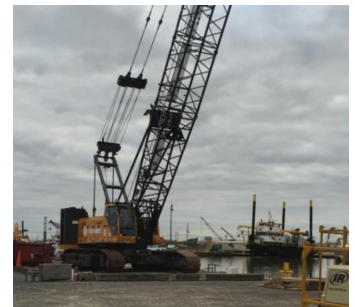
In addition to upgrading the dock area and after many months of hard work by the "backbone" of the company, Mr. Al Madere, Deep South Oilfield Construction LLC's newly elevated dispatch office opened for business in January. The new dispatch office not only gives dispatchers a complete view of the operation, but also provides a visual compliment to the Venice Port Complex. Together with Deep South Oilfield Construction, LLC and Madere & Sons Towing, LLC, the Maderes strive to satisfy customers' needs from all aspects of the industry.

For more information, please call 504-657-8283.



Fab-Con Incorporated

Fab-Con Incorporated is a company that has many qualifications resulting from over 50 years of oilfield and marine construction and fabrication experience. We are capable of doing various aspects of construction such as pile driving, building production platforms, laying pipelines, fabrication and installation of production equipment, dredging, levee construction, laying shell pads, and also Demolition and P & A projects. Fab-Con was incorporated in 1987 by the Giles Family and was originally located at 39804 Hwy 23 in Boothville Louisiana. After several successful years operating there, we expanded by opening a dockside location in Venice at 117 McDermott Road to provide better service to our customers. We have current MSA's in place with most of the major oil companies in the Gulf of Mexico as well as several independent oilfield companies and operators. After taking the full impact of Hurricane Katrina in 2005, we expanded our operations west to 1710 Young's Road in Morgan City. We did the bulk of our fabrication, offshore support, and crew dispatching from this location until repairs and renovations to our Boothville and Venice locations were completed. In 2007 Fab-Con opened our Gonzales office. This location handles all payables, payroll, and receivables. We are also now fully functional at our Boothville shop. We perform the bulk of our aluminum fabrication at that location now as well as steel and piping fabrica-



tion. Full operations including blasting and painting are also being performed there. Fab-Con's Venice dock is also open and operating at present time. We have completed dredging the slip and installing new sheet pile bulkheads in an effort to provide the best and safest dockside facility as possible. Fab-Con provides dockside support and storage services to several oilfield companies. We have upgraded our dock equipment and facilities to perform all of our services in a safe and timely manner. Safety and customer satisfaction are our highest priorities. In July of 2007, we began providing our dockside facility services to our customers further to the west. At our Morgan City location. We have new sheet pile bulkhead systems as well as a large slip and docking available on Bayou Buff. At this time, we provide fabrication and repair services from 2 fabrication shops, a full service blast and paint yard, as well as dockside service and repairs. In September 2011, we acquired and upgraded the old Omni Dock location across from our McDermott Road location on Tidewater Road to expand our growing business. We hope this expansion will draw on the "Deep Water" vessels and work being performed in the Gulf at this time. For more information, please visit our website at www.fab-con.net.



Clean Gulf Associates, Inc. (CGA)



Clean Gulf Associates, Inc. (CGA) provides the offshore oil and gas industry with specialized oil spill response resources and equipment to ensure the protection of the Gulf of Mexico and its environmentally sensitive ecosystem. With coverage across the northern Gulf of Mexico, CGA is ready 24 hours a day and offers a variety of equipment and personnel capable

of providing response resources for the deepwater, nearshore, and shallow water environments. With equipment prepositioned strategically at eight locations, CGA can be mobilized rapidly to any point in the Gulf of Mexico to help contain and collect released oil and protect the sensitive Gulf waters and marine habitat. The Breton Island, one of three of CGA's 95' Fast Response Vessels, is based in Venice and is designed to rapidly respond to offshore oil spills using state-of-the-art integrated X-band radar and infrared technology. Also prepositioned at our Venice site is a 46' Fast Response Vessel, a 60' Swallow Water Skimmer, and two Fast Response Units (FRU) Skimming Systems. For more information visit: www.cleangulfassoc.com.



9th Annual VPC Thanksgiving Drive



The Venice Port Complex (VPC) brought food, support and holiday cheer to 350 families in South Plaquemines during its 9th Annual Thanksgiving Basket Drive.

"It is a joy for the VPC to participate and host this annual Thanksgiving tradition and allows us to help and give back to so many in need in our community. I would also like to personally thank all of our tenants, local businesses and residents who participated and made this Thanksgiving tradition possible," said George Pivach, II, Vice President and General Counsel for the VPC.

The Thanksgiving baskets included a turkey and all the fixings for a traditional Thanksgiving meal. Additionally, children from the Boothville-Venice Elementary School colored pictures of various Thanksgiving themes, which were placed in each basket. With contributions and assistance from the VPC tenants, the Plaquemines Parish Council on Aging, local businesses and residents, the VPC was able to have a successful 9th Annual Thanksgiving Basket Drive.

"Each year I look forward to organizing and participating in the VPC Thanksgiving Drive and enjoy seeing the community come together in order to help our fellow residents and families in need," said Tony Frickey, Site Superintendent for the VPC.

The following businesses provided contributions to this event:

Platinum Level \$2,000 and above:

The Louisiana Fruit Company / Venice Port Complex; D&C Seafood, Inc.; Daybrook Fisheries, Inc.; Deep South Oilfield Construction, LLC; Fremin's Food Market and Madere & Sons Towing, LLC.

Gold Level \$1,000 to \$1,999:

Bonvillian Marine Service, Inc.; Fill-A-Sack of Boothville, Inc.; Galion Sweet Potatoes and John Vogt Farms.

Silver Level \$500 to \$999:

Delta Crewboat Services, Inc.; Ellzey Marine & Hardware, Inc.; Pivach, Pivach, Hufft, Thriffiley & Dunbar, LLC and R360 / Waste Connections, Inc.

Bronze Level \$100 to \$499:

Balestra's Food Center; Ben & Ben Becnel's; Cattle Farms, Inc.; Clean Gulf Associates, Inc.; Couvillion Group, LLC; Cvitanovic Boat Rentals, Inc.; EPS Logistics Company; Representative Chris Leopold; Royal Paper & Box and Venice Steel & Pipe.

The following companies and parish residents provided help and assistance:

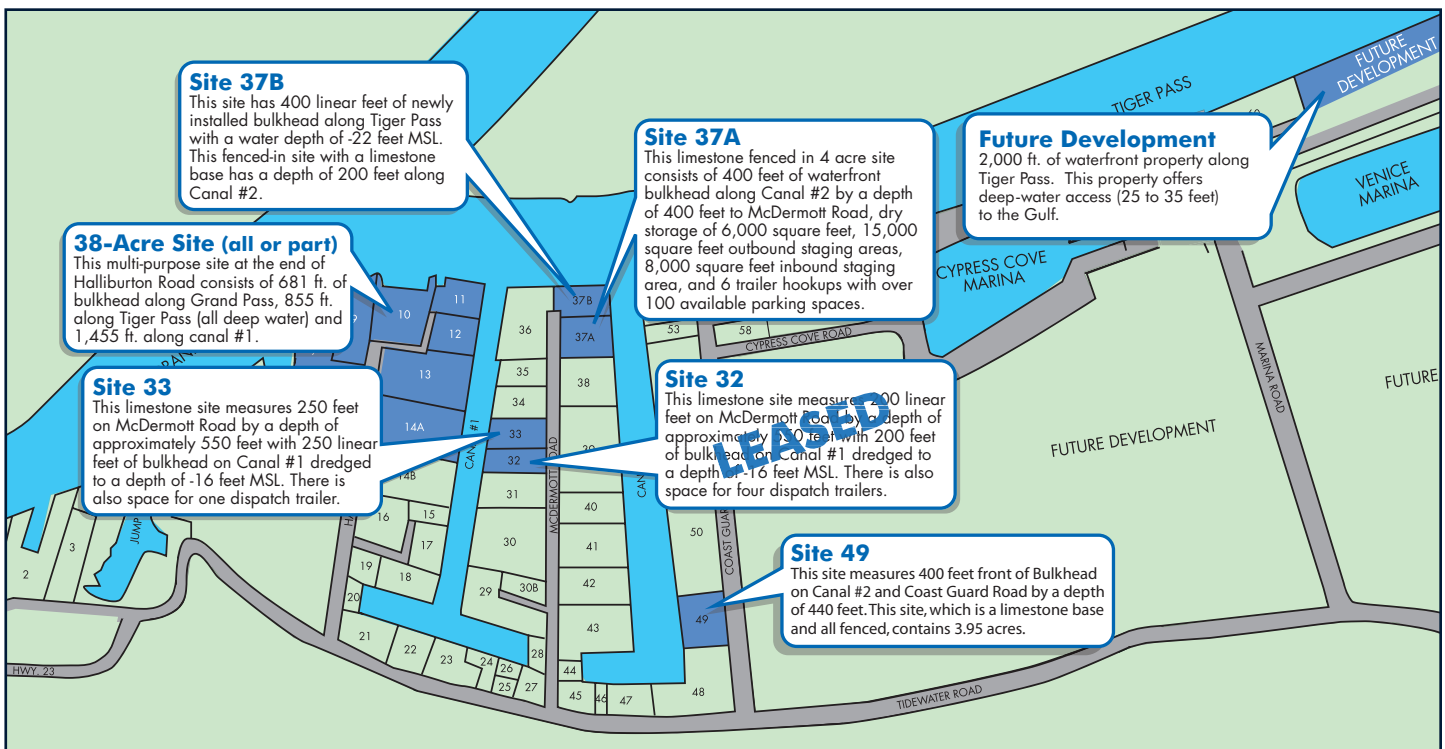
Boothville-Venice Elementary School, Boothville-Venice Volunteer Fire Department, Nicole Williams and staff, Jeff Edgecombe and staff, Lauren Frickey, Tony Frickey, John Barthelemy and staff, Dylan Madere, Jamie Madere, Tyler Madere, Plaquemines Parish Council on Aging, Port Sulphur Baptist Church, South Plaquemines Elementary School, South Plaquemines High School, Audrey Salvant and Staff, Venice Baptist Church and Chris Wooton.



8311 Highway 23 • Suite 104
 P. O. Box 7125
 Belle Chasse, LA 70037

Opportunities abound at the VPC

The VPC offers ready to move in properties as well as customizing to meet your company's specific needs.



The Venice Port Complex Report will be published three times a year. If you have any updates or news that you would like to contribute, please contact George Pivach II at 504-392-1830 or gpivach@veniceportcomplex.com.

www.veniceportcomplex.com